

Popular Bases of Support and Resistance to EU Membership in Turkey

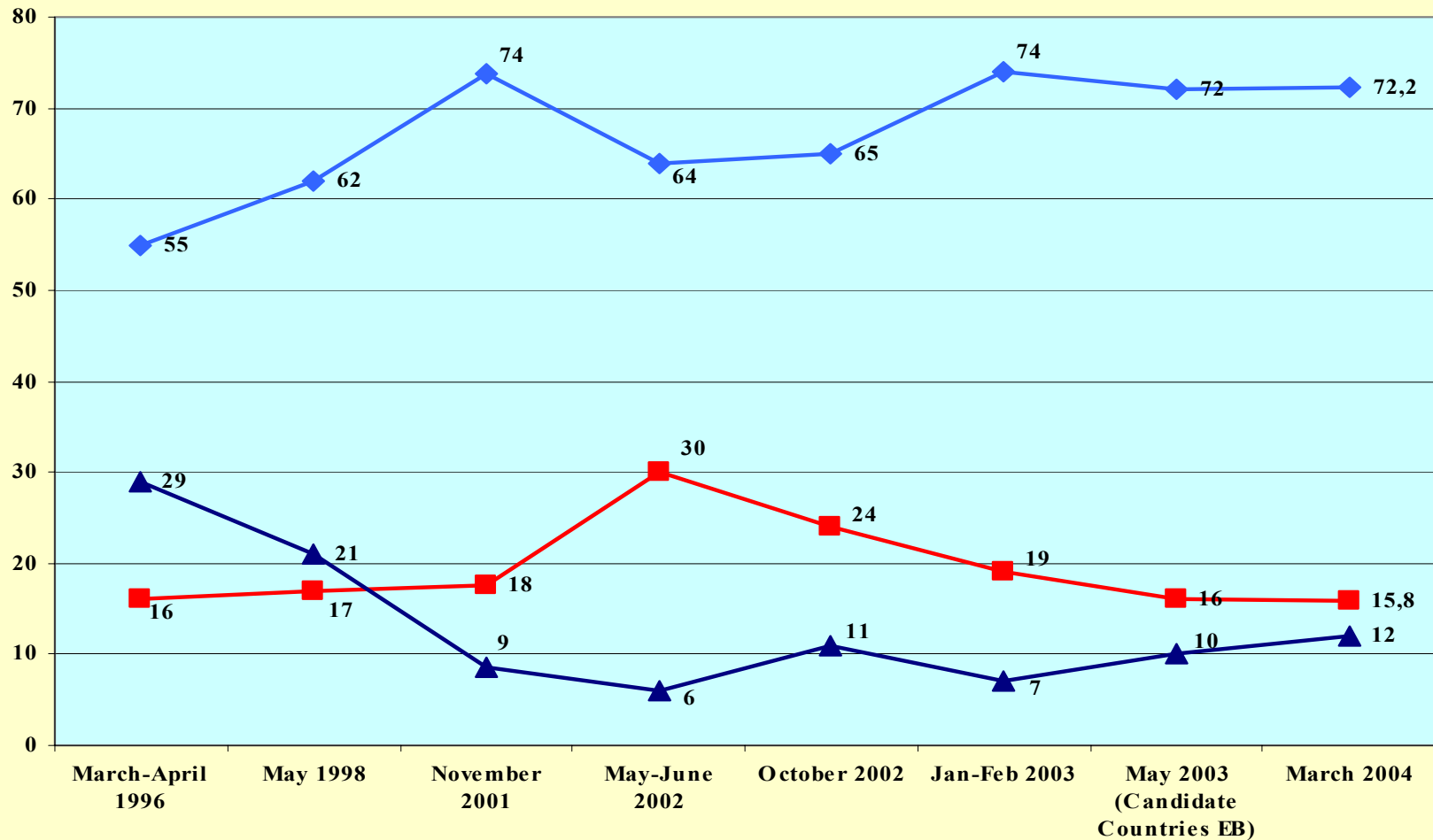
October 16, 2004

Ali Çarkođlu

**Sabancı
Üniversitesi**

Faculty of Arts and Social Sciences

Figure 1. Referendum about EU membership, 1996-2004



◆ Would support Turkey's membership

■ Would not support Turkey's membership

▲ NA

Figure 1. Level of Support for full EU membership across clusters of provinces – May-June 2002 (TESEV)

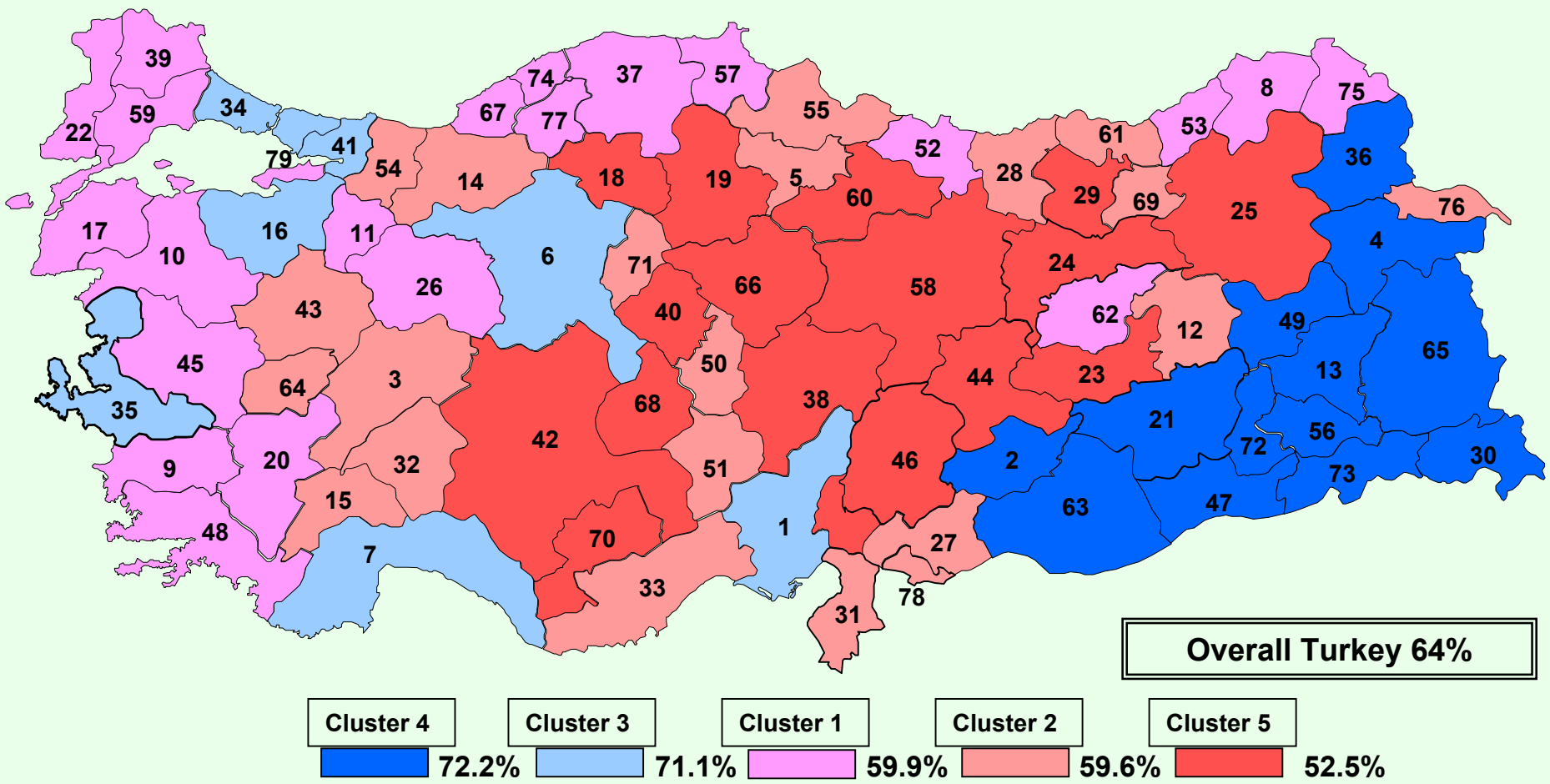
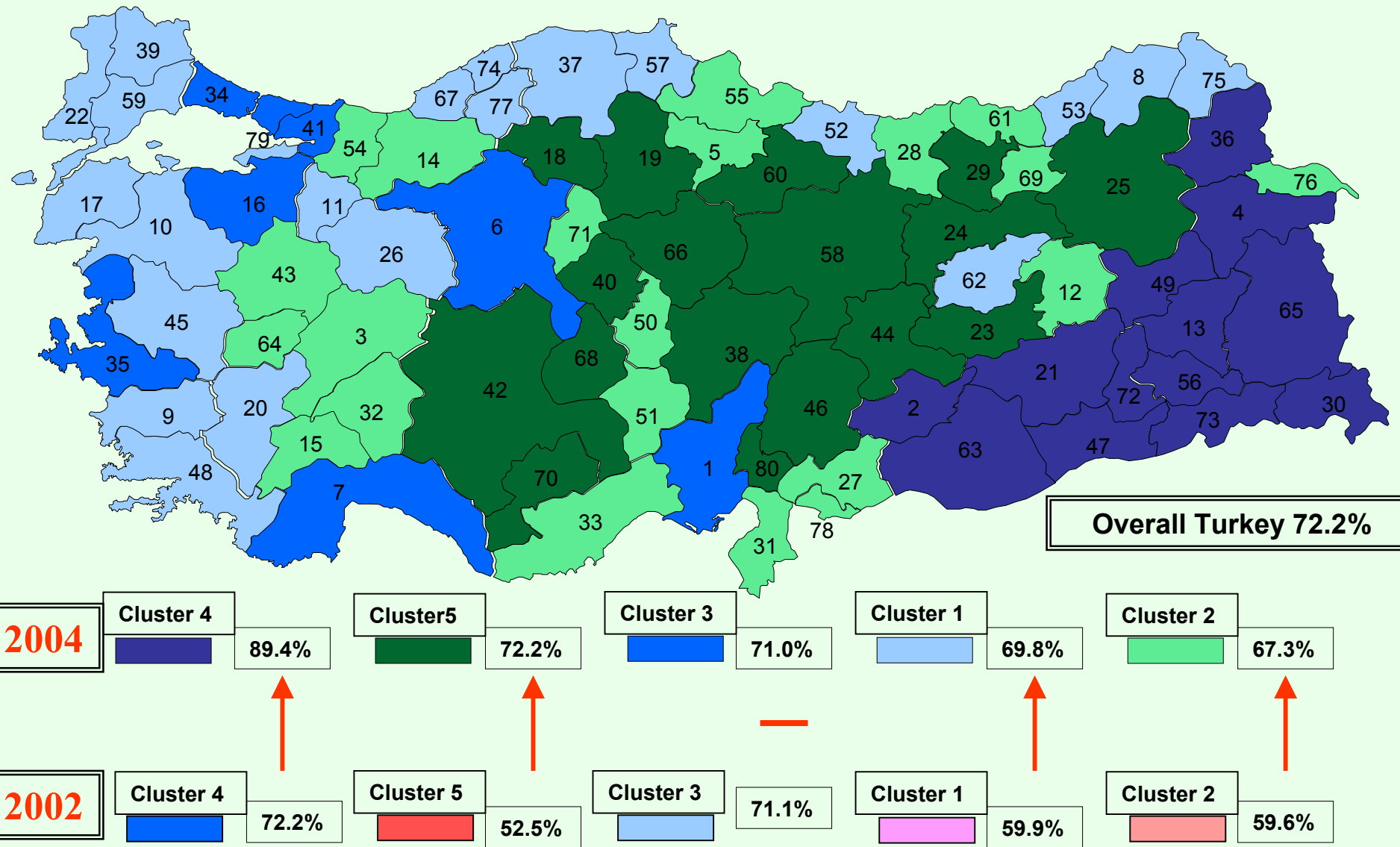
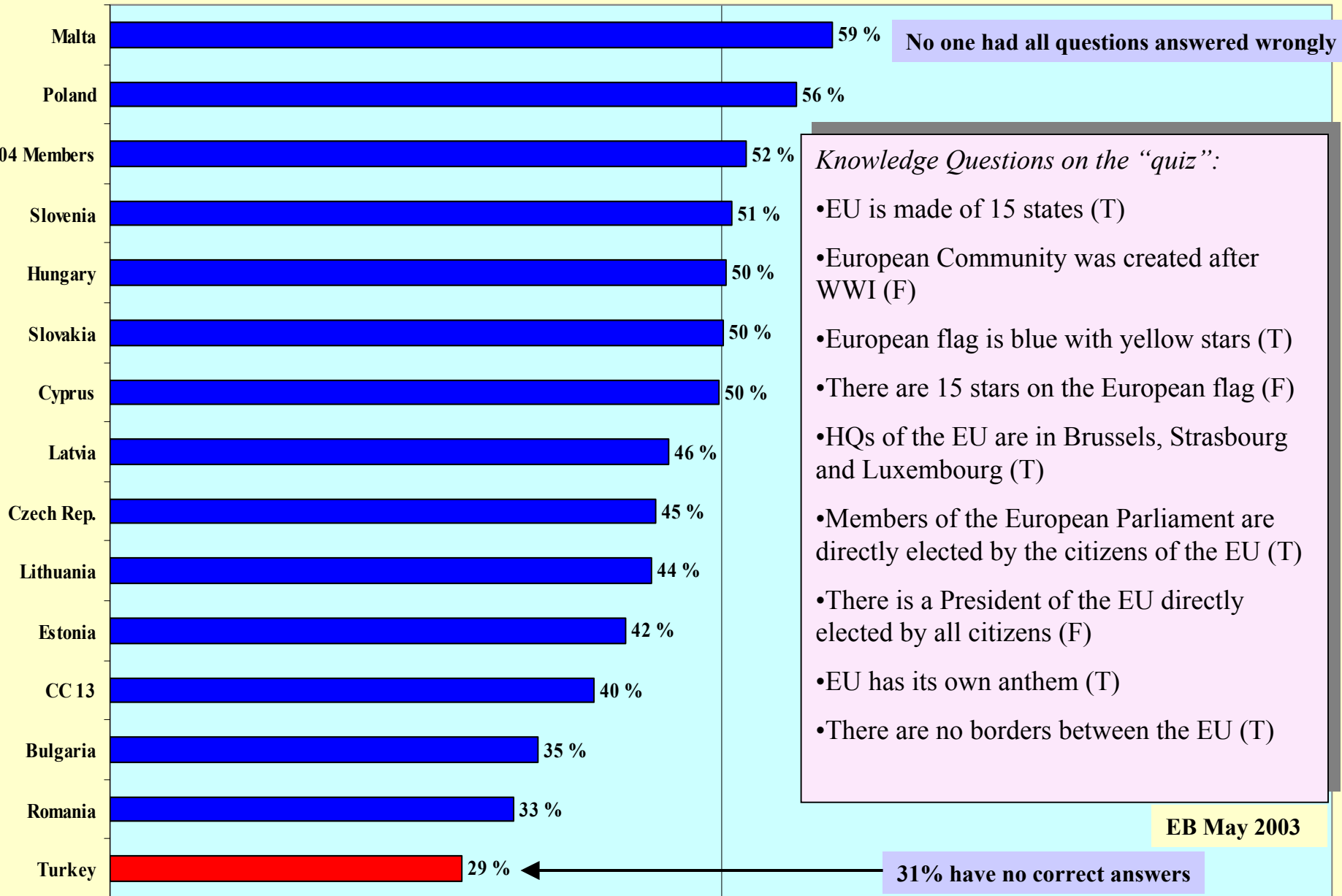


Figure 2. Level of Support for full EU membership across clusters of provinces – March 2004 (TÜSEV)



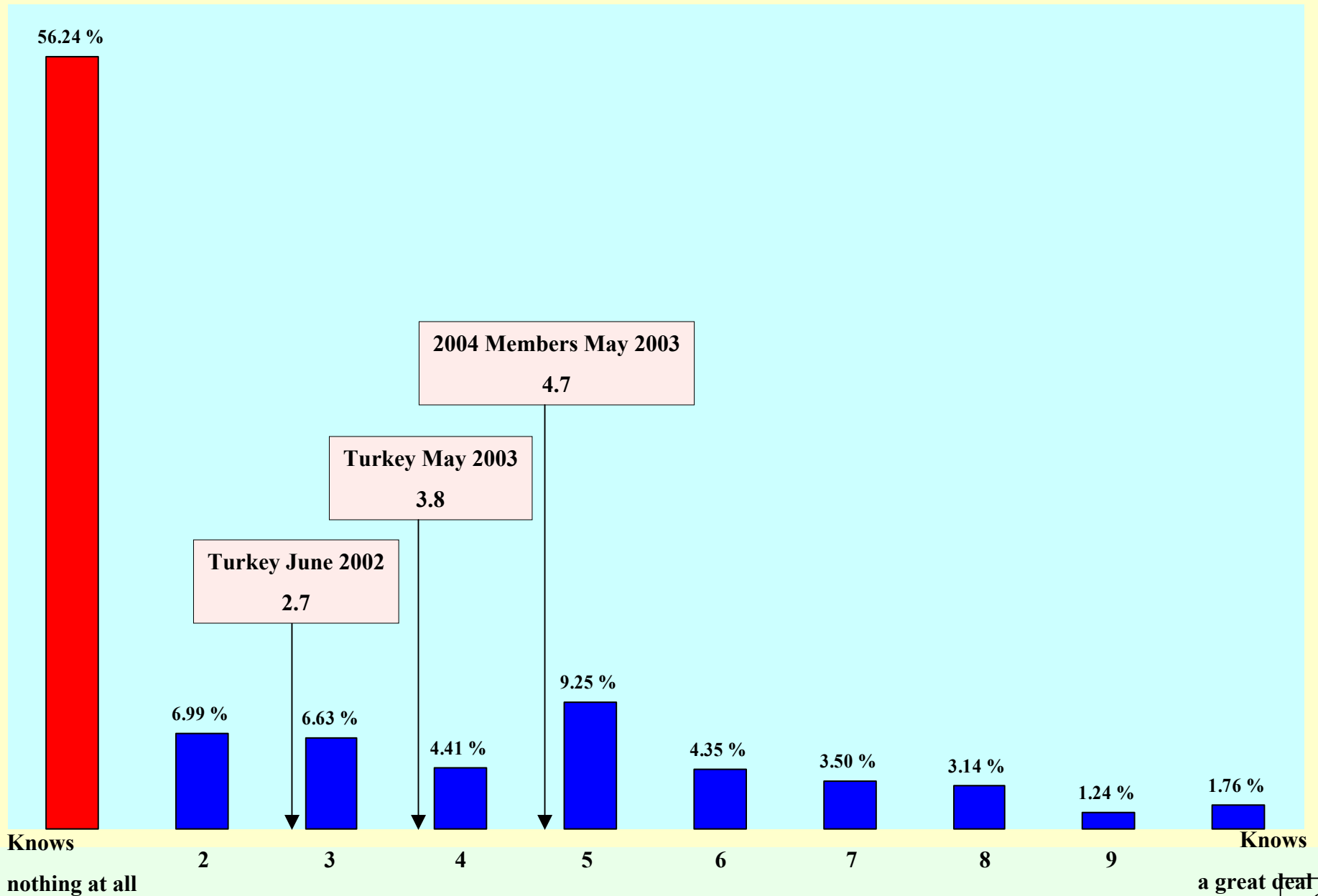
Knowledge of basic EU-related facts



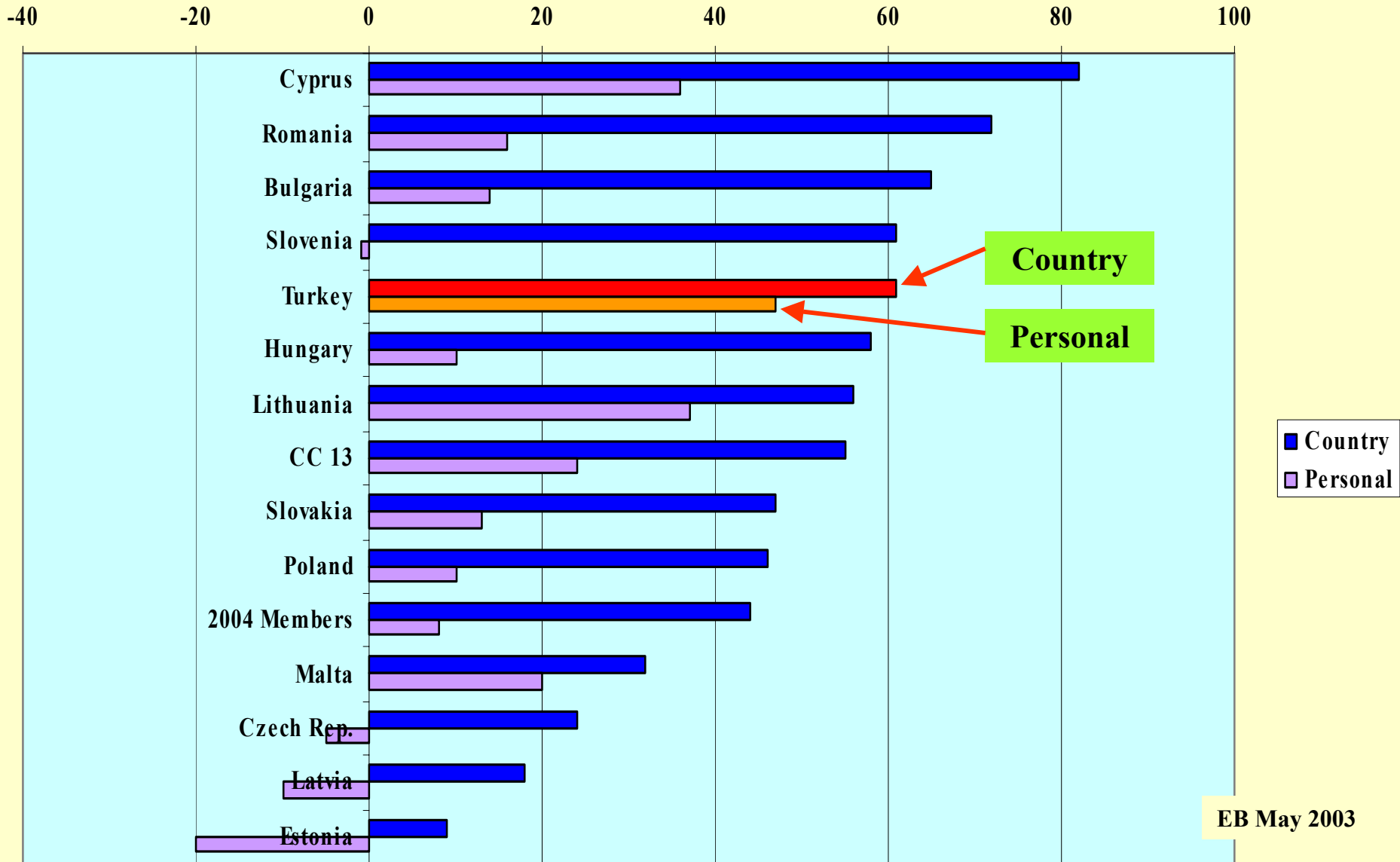
Knowledge Questions on the "quiz":

- EU is made of 15 states (T)
- European Community was created after WWI (F)
- European flag is blue with yellow stars (T)
- There are 15 stars on the European flag (F)
- HQs of the EU are in Brussels, Strasbourg and Luxembourg (T)
- Members of the European Parliament are directly elected by the citizens of the EU (T)
- There is a President of the EU directly elected by all citizens (F)
- EU has its own anthem (T)
- There are no borders between the EU (T)

Self-perceived knowledge about the EU



Country and Personal net benefits from EU membership compared



EB May 2003

What would be the most important benefit of EU membership for Turkey? What would be the second most important?

Economic development, reduction of inflation and unemployment	27,8
Freedom of movement in Europe for Turkish citizens	16,1
Development of democracy, expansion of participation in politics/administration	15,0
Reduction of corruption	12,9
More egalitarian behavior of the state towards citizens	10,6
Increase of Turkey's power in the international arena	9,4
Increasing social harmony	7,3
Other	0,8

What would be the most important detriment of EU membership for Turkey? What would be the second most important?

Weakening religious identity	27,6
Weakening national identity	27,2
Restrictions on independence	11,4
Weakening of the agricultural sector	11,1
Separatist movements gaining power	9,0
Weakening of Turkish corporations	6,8
Religious movements gaining power	5,0
Other	1,8

Most Important Problems of the Country

	October 2002	Jan-Feb 2003
Unemployment	29,7	28,3
Economic instability and crisis	27,1	27,1
Inflation	19,6	18,7
Political instability-uncertainty	7,4	2,9
Education	4,4	3,4
Corruption-bribery	3,4	1,9
Health-social security	2,3	2,1
Conflict in Iraq-war	1,2	11,6
EU-Foreign policy	0,6	1,0
Others	4,4	3,1

Salience of the EU Issues

Do you remember the topics that the EU adjustment package passed from the parliament in August 3rd, 2002?

October 2002 Jan-Feb 2003

Remembers	24,6	17,0
Does not remember	74,2	81,9
No Answer	1,2	1,2

(Asked only to those who remember the topics) Could you tell us what these topics were?

October 2002 Jan-Feb 2003

Lifting of the death penalty	41,3	20,1
Broadcasting and education in native languages	10,5	7,4
Human rights	14,4	21,4
Freedom of thought	3,9	4,3
Minority foundations	3,0	1,3
Other	26,9	45,4

Determinants of referendum support for EU membership 2002-2004

- **No significant differentiation across party constituencies once a multivariate specification is chosen.**

In 2004 CHP vote is negatively related to EU membership support.

As people move to the right of the L-R ideological spectrum they become more likely to support EU membership.

- **Increasing religiosity and anti-democratic attitudes decrease the likelihood of support significantly.**

Same negative impact in 2004.

- **As people's positive evaluations for their own lives when Turkey becomes a member increases their likelihood of support increases significantly. *Not asked in 2004 (NA).***

- **As people come to see the general populace, elites and anti-Europe leadership's support for EU increase their likelihood of support also increases significantly. *(NA)***

- **Education level is only effective beyond high-school level. University graduates are significantly more supportive of membership. *Same in 2004***

- **As people get older their likelihood of support for EU membership significantly increases.**

In 2004 age is no longer significantly related to support for EU membership.

- **Inner Anatolian provinces are negatively pre-disposed to EU membership.**

In 2004 the geographic picture completely changed. Impact of AKP leadership is important in this respect. Pro-Islamist conservatist agenda no longer has an anti-EU perspective.

- **Economic well-being and expectations are not significantly related to EU membership support.**

In 2004 no effect of economic evaluations observed.

- **Positions on "sensitive" issues are not significantly related to EU membership support. *(NA)***

- ***In 2004 as trust in media increases so does the likelihood of support for EU membership.***